

LED Specification

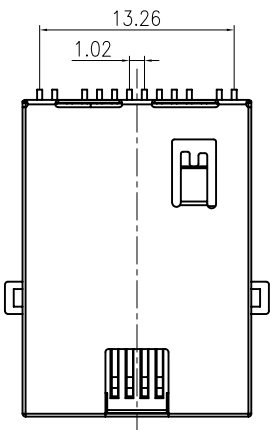
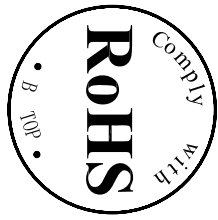
Standard LED Color	LED Wavelength (nm)	Forward Voltage (V MAX)	Typical Voltage (V TYP)	Luminous Intensity (mcd)
Green	560-580 nm	2.5V	2.1-2.2V	9-25 MCD
Yellow	580-610 nm	2.5V	2.1-2.2V	9-30 MCD
Orange	580-610 nm	2.5V	2.1-2.2V	50-100 MCD

1. LED intensity/wavelength measured with Photo Research PR-650 Colormeter
2. With a forward current of 20 mA, Absolute Maximum Ratings (To=25°C)

Specification

1. TOLERANCES UNLESS OTHERWISE SPECIFIED :
0~10±0.15, 10~20±0.2, 20~40±0.25,
40~70±0.3, >70±0.4

2. JACK CAVITY CONFORMS TO FCC RULES AND REGULATIONS, PART 68 SUBPART F.



B-TOP [®] 东莞市博腾电子科技有限公司
Dongguan BroadTop Electronic Technology Co., Ltd.

FIRST ANGLE PROJECTION
TEL: 0769-38928198
FAX: 0769-38928199
Website: www.BroadTop.com
www.BroadTech.com

Designed: _____
Checked: _____
Approved: _____
MATERIAL: _____
SCALE: 2:1
UNIT: mm
MODEL NO.:

B50SMT(36-01)F4-03A-P113-B92(FAB UP Y-C SMT 2.1.6)

REV.

DESCRIPTION

ELECTRICAL: RJ45 With internal Magnetics Connector
 Design to support such applications as: Ethernet Equipment Complex, Switches, Routers, Firewalls, Servers and Hub
 Internal magnetics are 100% electrically tested for functionality per IEEE802.3 requirement
 RoHS peak wave temperature rating 235 μ
 High performance for maximum EMI suppression
 350 μ H minimum OCL with 8mA bias current

MECHANICAL: JACK CAVITY CONFORMS TO FCC RULES AND REGULATIONS, PART 68 SUBPART F.

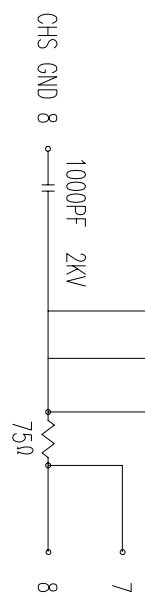
INSERTION FORCE: 8 CONTACTS--900g, 10 CONTACTS--1050g
RETENTION STRENGTH: 7.7Kgs BETWEEN JACK AND PLUG
DURABILITY: 750 MATING CYCLES Mini

MATERIAL:
HOUSING: 1) GLASS FILLED PA66 (UL 94V-0)
 2) GLASS FILLED PA46/PA6T/PA9T/LCP (UL 94V-0)
 3) GLASS FILLED PBT/PA/ABS/PC (UL 94V-0)

SPRING WIRE: 0.25-0.35mm THICKNESS(50-80 μ) PHOSPHOR BRONZE ALLOY SELECTIVE GOLD PLATING OVER NICKEL
SHIELDING: 0.2-0.24mm THICKNESS(50-80 μ) COPPER ALLOY WITH TIN PLATED

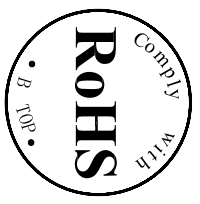
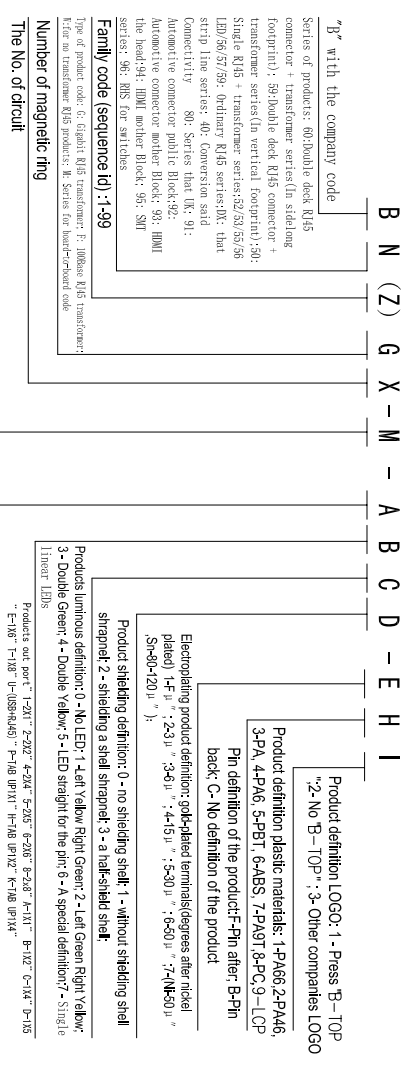
GOLD PLATING: 3 μ , 6 μ , 15 μ , 30 μ , 50 μ
Storage: -40 \circ C~85 \circ C Relative Humidity<70%
Operating: 0 \circ C~70 \circ C

TOLERANCES UNLESS OTHERWISE SPECIFIED: 0-10 \pm 0.2, 10-20 \pm 0.25, 20-40 \pm 0.340-70 \pm 0.35, >70 \pm 0.4.



ELECTRICAL SPECIFICATIONS AT 25 \circ C

Insertion Loss dB max	Return Loss dB min	Crosstalk (db TYP)	Common Mode Rejection (db TYP)	Hypot(Vrms)
1-125MHz	1-30MHz	1-100MHz	1-100MHz	1500/0.5mA OR 2250C/0.1mA
-1.2	-18	-18+20log(f/30MHz)	-30	



B-TOP[®] 东莞市博腾电子科技有限公司

Dongguan BroadTop Electronic Technology Co., Ltd.

FIRST ANGLE PROJECTION		TEL: 0769-38926198	Checked	MATERIAL	SCALE 1.8:1	UNIT mm	MODEL NO.	REV.
		FAX: 0769-38926199	Approved					
Website: www.BroadTopTech.com								

Designed	1	BT F4-03A	2
----------	---	-----------	---